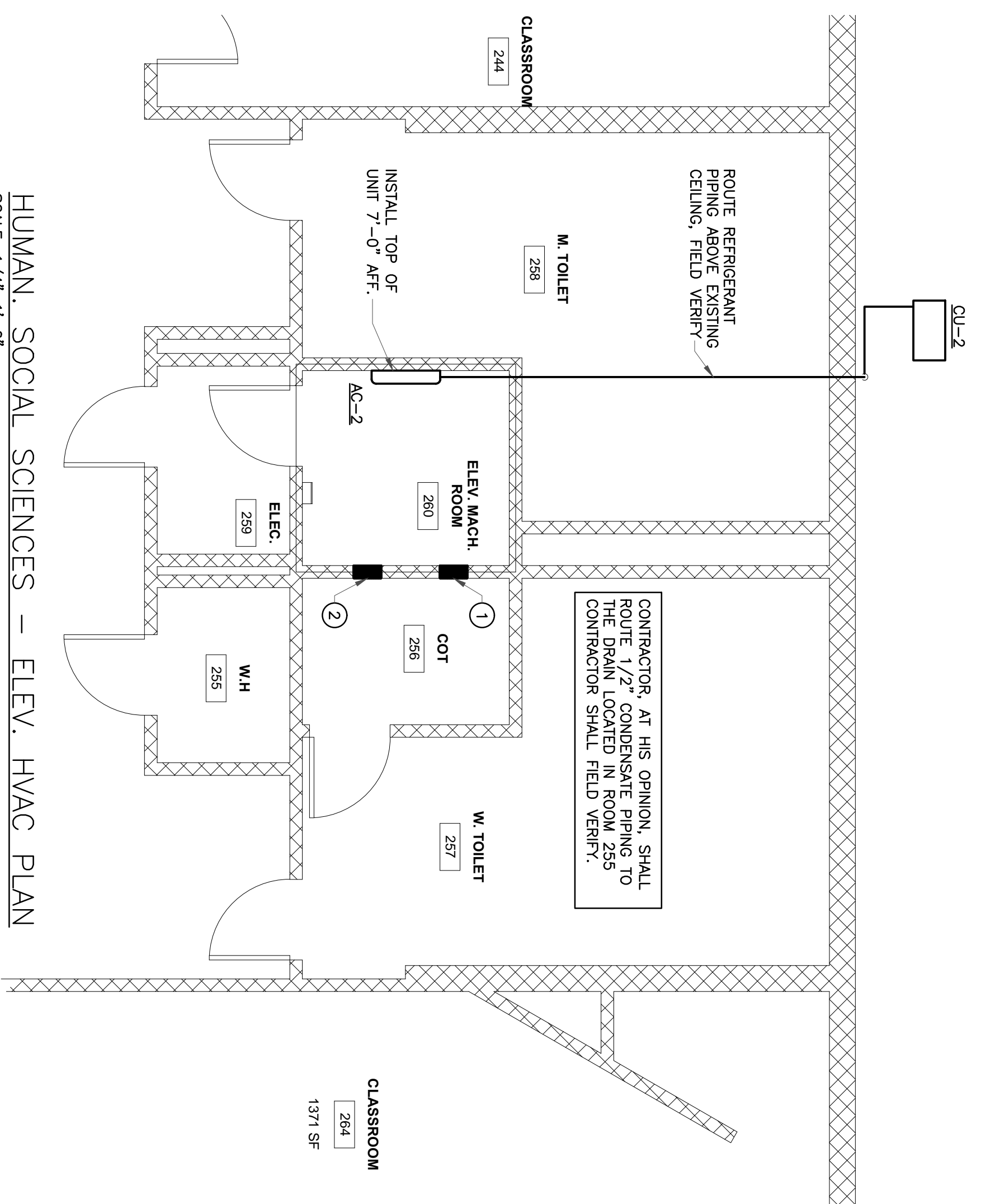


- HVAC GENERAL NOTES:**
1. COORDINATE EXACT ROUTING OF HVAC PIPING WITH ALL OTHER TRADES INTERFERING MECHANICAL PER CODE - 2006 AND ALL LOCAL CODE.
 2. ALL HVAC DUCTWORK, PIPING AND EQUIPMENT INSTALLATION SHALL BE COMPLETELY COORDINATED WITH ELECTRICAL, PLUMBING, MECHANICAL, ETC. AND ALL OTHER TRADES. NO DUCT OR PIPE SHALL BE FABRICATED OR IN PLACE UNTIL SUCH COORDINATION HAS TAKEN PLACE.
 3. FINAL EXACT LOCATION OF DUCT, PIPING, AND EQUIPMENT MAY VARY FROM PRELIMINARY PLANS DUE TO COORDINATION REQUIRED WITH OTHER TRADES. AS A RESULT, THESE PLANS DO NOT NECESSARILY SHOW EXACT AND EXTERIOR FINISH LOCATIONS. THE CONTRACTOR SHALL PROVIDE BY THE CONTRACTOR DUE TO IMPERATIVE THAT THE DUCTWORK BE CLOSELY COORDINATED SO THAT CEILING HEIGHTS ARE NOT COMPROMISED.
 4. ALL CONDENSATE DRAIN PIPING SHALL BE TYPE L COPPER.
 5. ALL CONDENSATE DRAIN PIPING SHALL BE INSULATED WITH 3/4" THICK ARMAFLEX INSULATION.

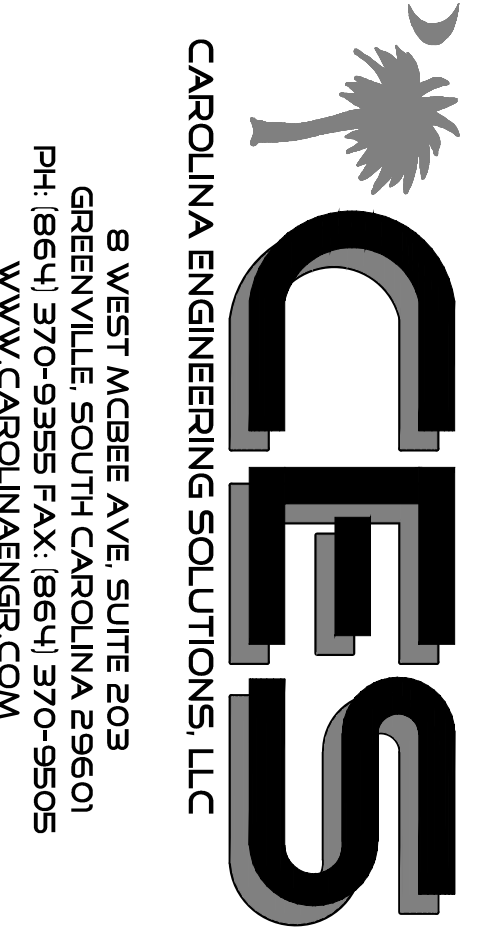


- KEYED NOTES:**
1. INSTALL FIRE DAMPER IN EXISTING 12x8 DUCT TO BIDDING. EXACT SIZE AND LOCATION PRIOR TO BIDDING.
 2. INSTALL FIRE DAMPER IN EXISTING 12x8 DUCT TO BIDDING. EXACT SIZE AND LOCATION PRIOR TO BIDDING.

DUCTLESS SPLIT SYSTEM AIR CONDITIONING UNIT SCHEDULE

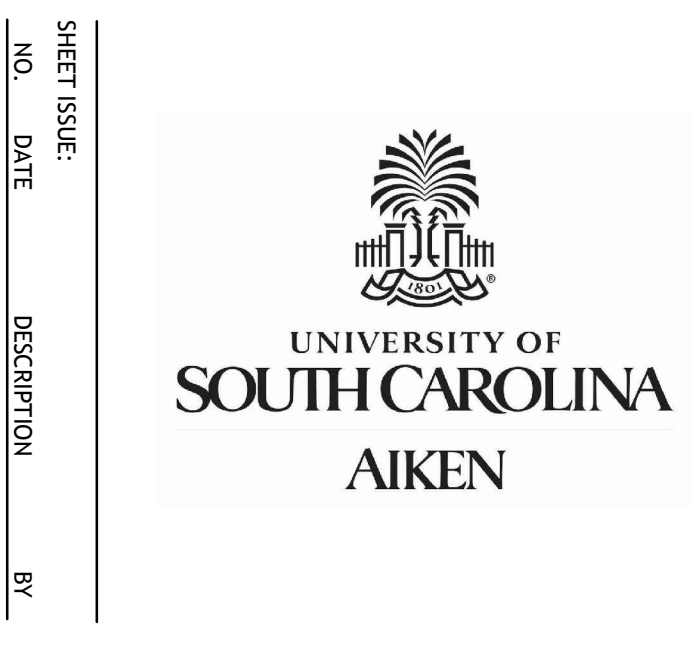
INDOOR UNIT SECTION				OUTDOOR UNIT SECTION				ELECTRICAL DATA	AREA SERVED	REMARKS
EQUIP. NUMBER	MODEL	S/A CAPACITY BTU	COOLING BTU	EQUIP. NUMBER	MODEL	M.C.A.	M.C.C.P.			
AC-2	PKA-A12GAL	400	12,000	CU-2	PV-A12NHA	13.0	15	208/1/50	ELEVATOR MACHINE 280	1,2,3,4,5,6

1. PROVIDE WALL MOUNTED CONTROLLER/THERMOSTAT.
 2. PROVIDE LOW AMBIENT CONTROL TO ZERO DEGREE F.
 3. PROVIDE WITH CONDENSATE PUMP. UNIT IS FED FROM OUTDOOR UNIT. IF SEPARATE POWER FEED FOR INDOOR UNIT IS REQUIRED BY MANUFACTURER.
 4. APPROVED EQUAL PRODUCT IS USED. CONTRACTOR IS RESPONSIBLE FOR SEPARATE POWER FEED FOR INDOOR UNIT IF REQUIRED BY MANUFACTURER.
 5. 4" THICK CONCRETE PAD FOR OUT DOOR UNIT.

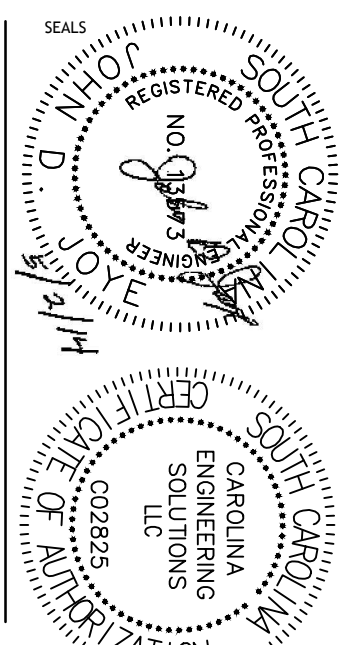


8 WEST MCBEE AVE, SUITE 203
 GREENVILLE, SOUTH CAROLINA 29601
 PH: 864.585.5500
 WWW.CAROLINAENR.COM

ISSUE FOR BID 05/02/2014
 PROJECT NUMBER: 05
 DRAWING BY: HW
 SHEET TITLE: MECHANICAL PLAN
 SHEET NO.: M-1
 PROJ. NO.: 13-012



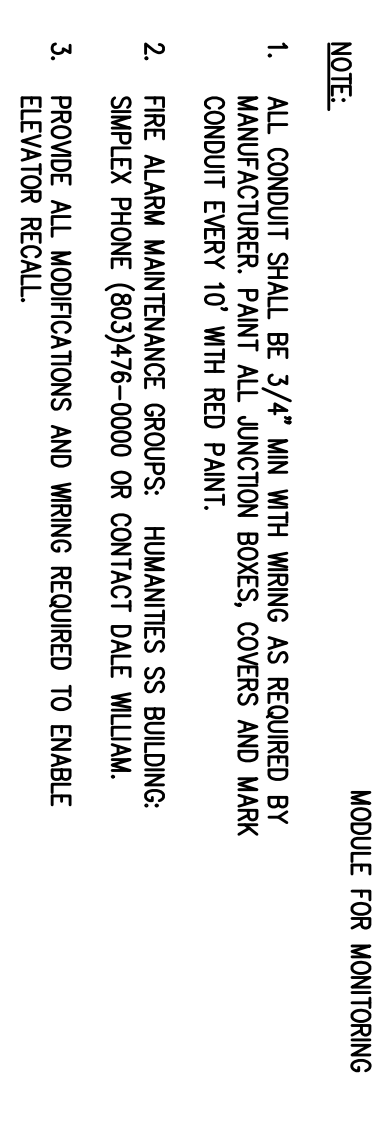
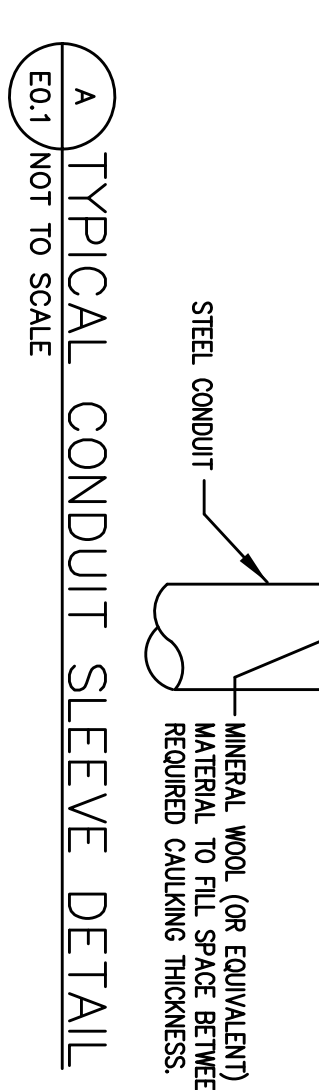
USC AIKEN
HUMANITIES & SOCIAL SCIENCES ELEVATOR REPLACEMENT
OSE # H-29-9542-JM
 47 1 UNIVERSITY PARKWAY
 AIKEN, SC 29801



CONSULTANT LOGO

charleston greenville spartanburg
 po box 5331 spartanburg, sc 29304 o. 864 585 5678 f. 864 542 9451
www.mcmillanpazdansmith.com

PROVIDE FIRESTOPPING THRU ALL RATED (1 HOUR AND ABOVE) WALLS. FIRESTOPPING SHALL BE 2" OR 2#6B



FIRE ALARM RISER DIAGRAM (TYPICAL FOR 3) NOT TO SCALE

- ELEVATOR RECALL SYSTEM NOTES: 1. UPON SENING SHOVE FROM ANY OF THE LBBY, SHAPT OR MACHINE ROOM SHOVE DETECTORS, BRING ELEVATOR TO MAIN RECALL LEVEL...

ELEVATOR RECALL SYSTEM NOT TO SCALE

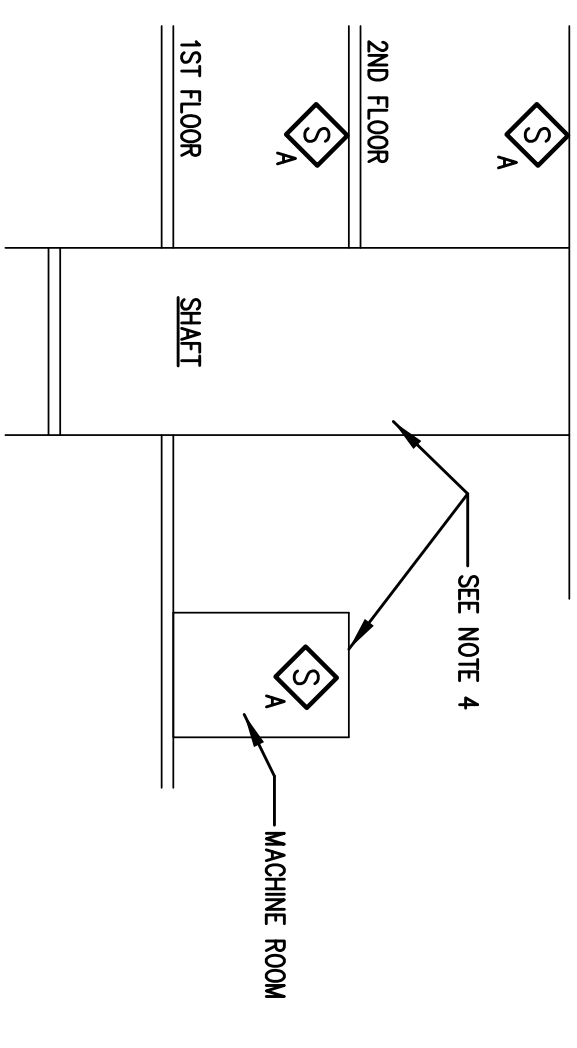


Table with 2 columns: SYMBOL and DESCRIPTION. Contains symbols for fire alarm devices, wiring, and general notes.

- ELECTRICAL GENERAL NOTES: 1. INSPECT SITE PRIOR TO STARTING BID. DRAWINGS ARE INTENDED TO COVER ALL ELECTRICAL WORK...

ABBREVIATIONS table mapping acronyms like ACT, AFT, AFG to their full names and descriptions.

- GENERAL LIGHTING NOTES: 1. MANUFACTURERS & NUMBERS ARE LISTED TO ESTABLISH QUALITY AND NOT TO LIMIT COMPETITION...

LIGHTING FIXTURE SCHEDULE table with columns for FIXTURE TYPE, FIXTURE DESCRIPTION, ACCEPTABLE MANUFACTURERS, MOUNTING HEIGHT, LUMPS, FIXTURE WATTAGE, and VOLTAGE.

